

## Circumferential Inspection (360°)

# Enneascope

The Enneascope controls the quality of cylindrical or polygonal products in a very simple way. The product passes under the Enneascope and the 9 cameras capture the circumference of the product. No matter if the product is shiny, transparent or opaque, the stroboscopic image capture will assure a perfect quality and glare-free image. The number of defects you want to control is unlimited.

### Applications

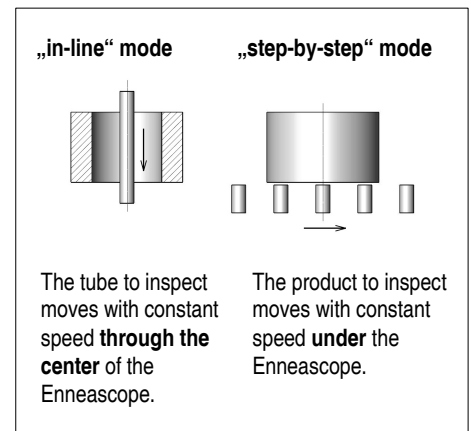
- inspection of cylindrical or polygonal pieces (step-by-step mode)
- inspection of tubes of infinite length (in-line mode)
- inspection of shiny, transparent and opaque products
- accuracy within 0.01 mm

### Benefits

- circumferential inspection (360°) without rotation
- simple handling of objects to inspect
- unlimited number of analysis
- protected optics
- small footprint
- inspection speed: 5 pcs/sec.

### Operation

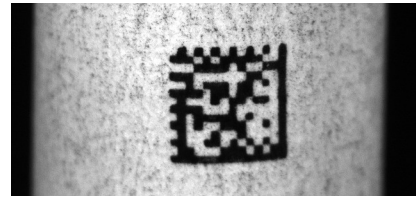
- the product has to be moved under or through the center of the Enneascope
- no product rotation is required
- simultaneous analysis possible



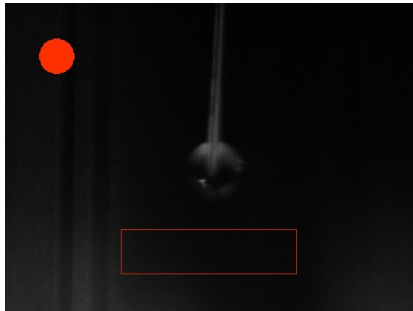
## Examples of inspection



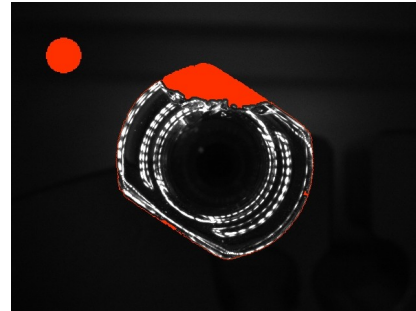
reading of engraved datamatrix (glass)



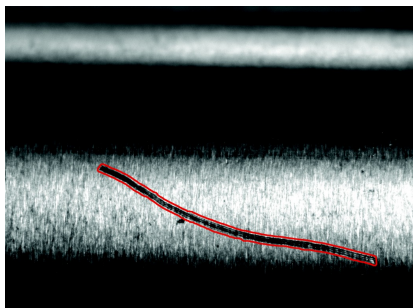
reading of printed datamatrix (paper)



inspection of presence of needleshield (syringe)



flange inspection (syringe)



surface inspection (scratch)



text recognition (OCR)

## Technical data

Range:	diameter from 0 to 50 mm, other on demand
Capacity:	up to 300 pces/min
Electrical:	230 V, 50 Hz, 1000 W, other version on demand
Design:	GMP, CE, OSHA
Communication:	ethernet, contact without potential
Footprint:	diameter 270 mm, height 700 mm