



Lab-Line

MF-Lab Sizing and sieving machine «oscillating/rotating»

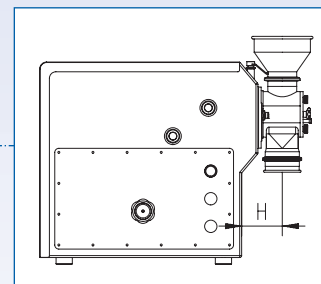
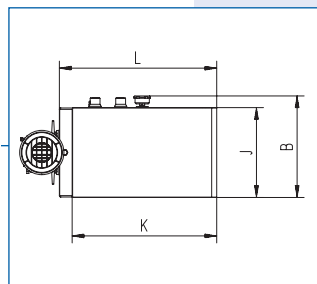
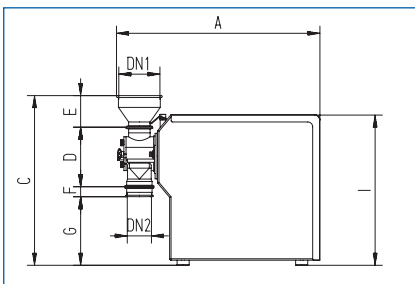
Profit from the following advantages for your laboratory:

The modular, compact and user friendly concept of the MF-Lab guarantees optimum sizing results from both dried and wet products for the pharmaceutical, chemical and foodstuff industry.

- The oscillating or rotating rotor motion permits an absolutely gently sizing of the products
- The completely sealed finish protects the product from possible contamination
- Sieve and rotor can be easily installed and removed through the front swing door
- Fast and easily removable machine head
- Machine head suitable for sterilisation at 130 °C
- Distance between rotor/sieve manually adjustable
- The machine housing conform to the GMP and FDA guidelines permits an efficiently and hygienically cleaning
- Big choice of different types of sieves for dry or wet sizing
- Gas purged drive bearing head on request
- Customised solutions thanks to the completely modular and flexible construction of the MF-Lab
- Suitable for installation in a Glove-Box
- Fulfills the guideline of ATEX 94/9/EC



Standard dimensions (subject to modifications)



Installation	A	B	C	D	DN1	DN2	E	F	G	H	I	J	K	L
Not Ex	841	447	696,5	235	170	80	131,5	40,5	289,5	125	622,5	383,5	617	671,5
Ex	841	447	696,5	235	170	80	131,5	40,5	289,5	125	622,5	383,5	617	671,5
	Flowrate*		Voltage			Rotor speed			Power		Net weight			
Not Ex	~100 kg/h		3 x 400 V – 3P + N + PE			50–400 osc./min			3.75 kW		~90 kg			
Ex	~100 kg/h		3 x 400 V – 3P + N + PE			50–400 osc./min			3.75 kW		~100 kg			
System	Parts in contact with product						Parts not in contact with product							
Material	1.4435 / 1.4404 (AISI-316L)						1.4301 / 1.4305 (AISI-304)							
Seals	FDA conform seal materials (EPDM / PTFE)						Various seals materials							
Surfaces	Ra ≤ 0,8 µm polished / Head Ra ≤ 0,4 µm polished						Ra ≤ 1,4 µm, polished							
Welding seams	ground and polished						Treated and ground							
Rotor	3 arms													
Sieve	Dry sizing: round or square wire sieves / perforated plates Wet sizing: fine sieves with round wire													
Distance rotor / sieve	½ the mesh opening width / maximum 1 mm													
Rotor speed	Stepless, manually adjustable via mechanical handwheel (optionally with frequency converter)													

* Flowrate is depending on product characteristics and particle size.